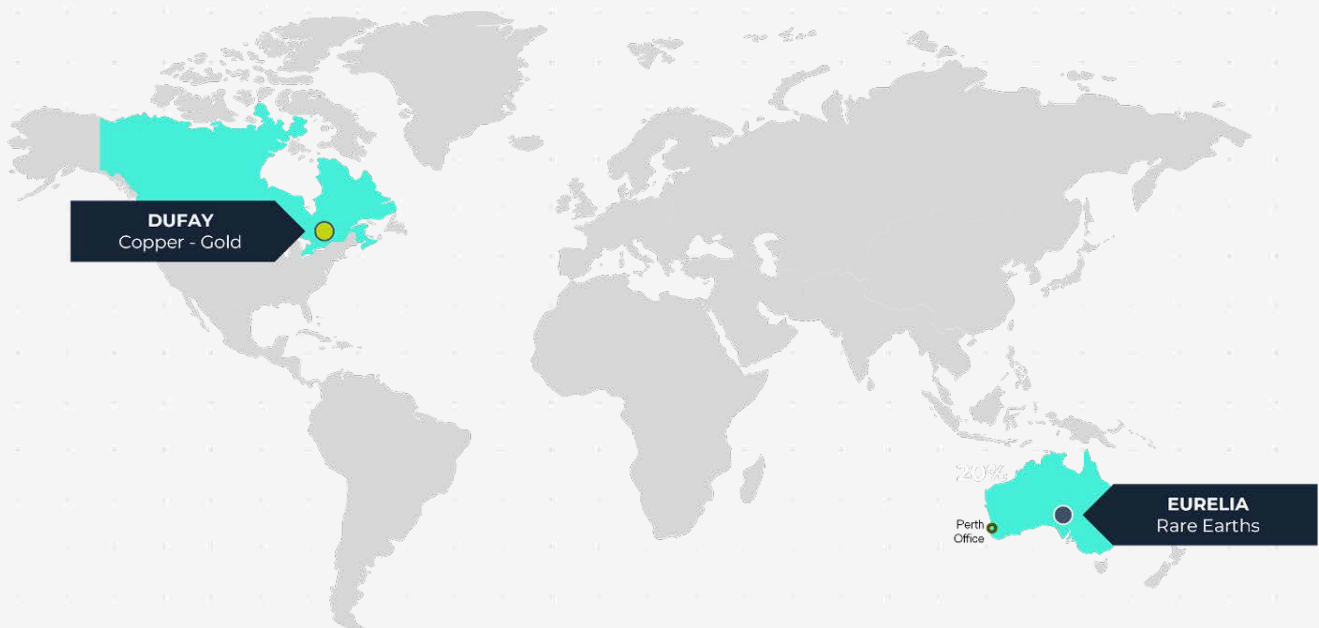




Q&A with the Managing Director Sean Delaney at Olympio Metals

Olympio Metals Ltd (Olympio) recently acquired the Dufay gold-copper project, southern Quebec, in November 2024.

The Dufay Project represents a fantastic opportunity to gain exposure to over 10km strike extent along one of the world's premier gold mineralised structures, the Cadillac Break.





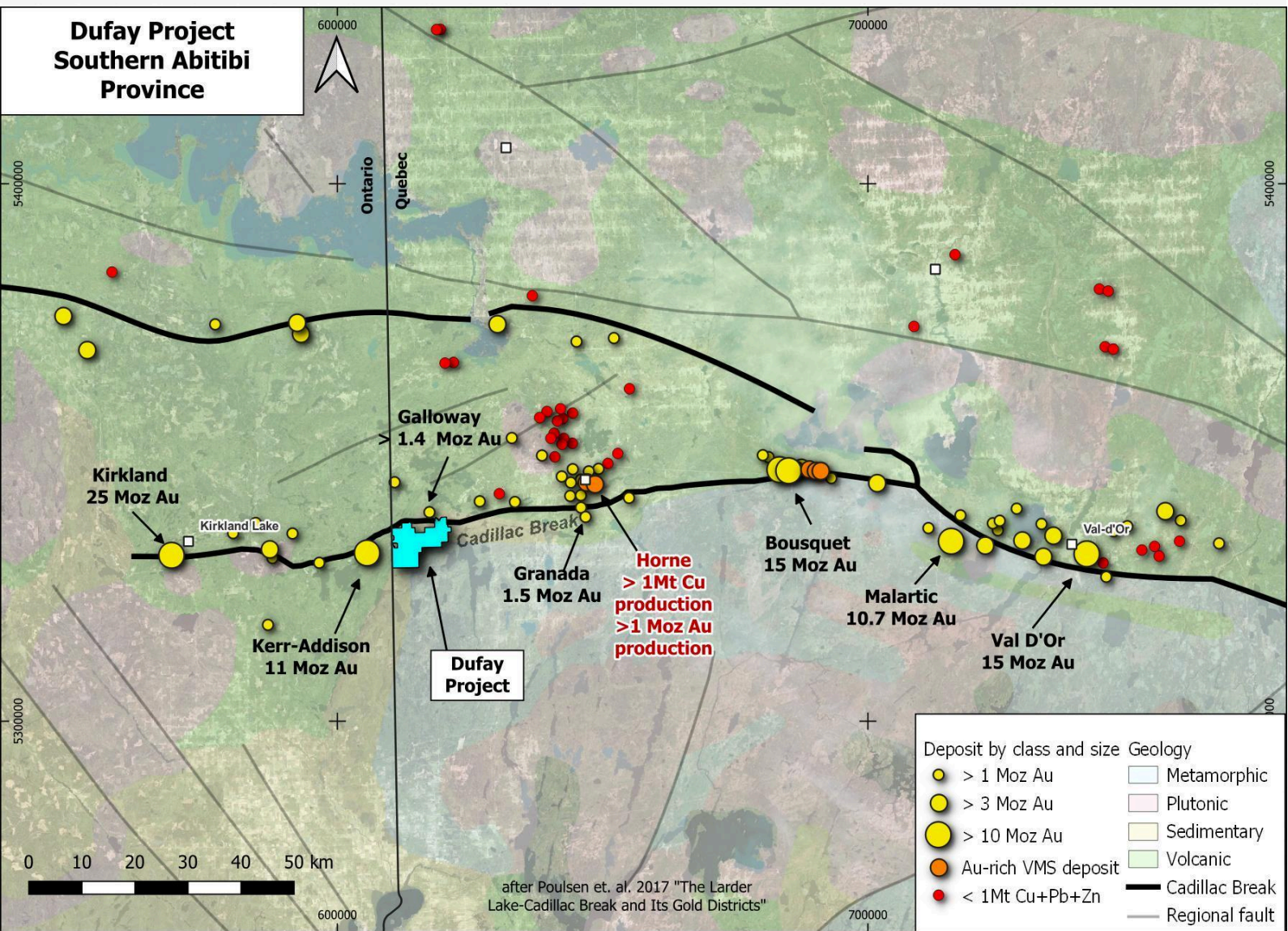
Question:

Who are your neighbours in this region, and what significant exploration is occurring in the Southern Abitibi belt along this trend or structure?

What is the total amount of resources measured in ounces along this belt?

Answer:

The Cadillac Break is a regional structure extending across the Southern Abitibi Archaean greenstone belt and is associated with world-class gold-copper mineralisation (>110Moz Au). Multiple resources > 1Moz Au occur within 5km of Dufay Project, including the historic Kerr-Addison mine (>11Moz Au) and the actively explored Galloway porphyry Au-Cu (>1.4 Moz Au, Fokus Mining).. The project area occurs in the Pontiac Sub-Province, to the immediate south of the Cadillac Break, a region that has been historically overlooked in favour of Abitibi Sub-Province greenstones to the north of the Cadillac Break. However recent decades have seen Pontiac Group sediments adjacent to the Cadillac Break recognised as highly prospective for gold, with resources defined including Malartic (10.7 Moz Au, Agnico Eagle), and Granada (1.5 Moz Au, Granada Gold). Both Malartic and Granada have demonstrated porphyry intrusive association.





Question:

What can you tell me about the area's geology? Are you focusing on any particular types of deposits, like Porphyry or VMS?

Answer:

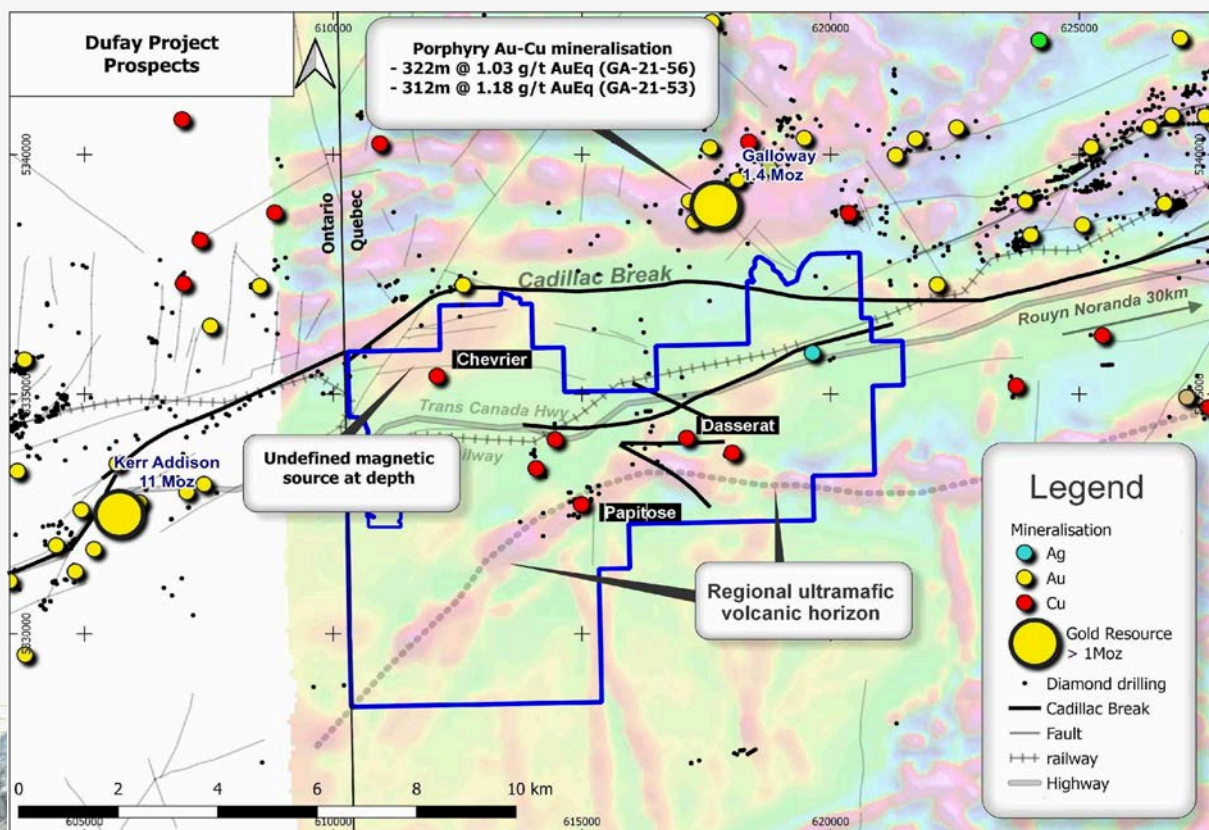
Porphyry Au-Cu Targets

The region is prospective for multiple mineralisation styles, including porphyry Au-Cu (e.g. Galloway Project, Fokus Mining), shear-hosted Au (e.g. Kerr-Addison) and vein-hosted quartz-sulphide Cu-Au. The occurrence of numerous, under-explored syenite porphyry intrusives at Dufay represents a fantastic porphyry Au-Cu mineralisation target, very similar to the recently defined porphyry Au-Cu resource defined at Galloway <5km to the north (>1.4Moz Au, Fokus Mining).

Ultramafic Volcanic Horizon – Polymetallic Exhalative Target

A volcanic ultramafic horizon extends through the project area, and appears to be spatially associated with numerous quartz-sulphide hosted Cu-Au-Ag prospects. A similar volcanic horizon has been defined in the Pontiac Sub-Province further east at the Victoria Multi-Metal Zone Project (Renforth Resources), where polymetallic mineralisation (Ni-Cu-Co-Zn-Pt-Pd) has been defined in exhalative sediments associated with a regional volcanic ultramafic horizon along a significant strike extent (>2.5km).

Within the Dufay Project, a portion of the Cadillac Break is obscured by Proterozoic sedimentary sequences, and there is an opportunity to apply modern geophysical techniques to explore under cover. Applicable methods include detailed aero-magnetics, airborne EM and ground gravity. Prospective zones for further study are being defined, based on available structural and drilling data.





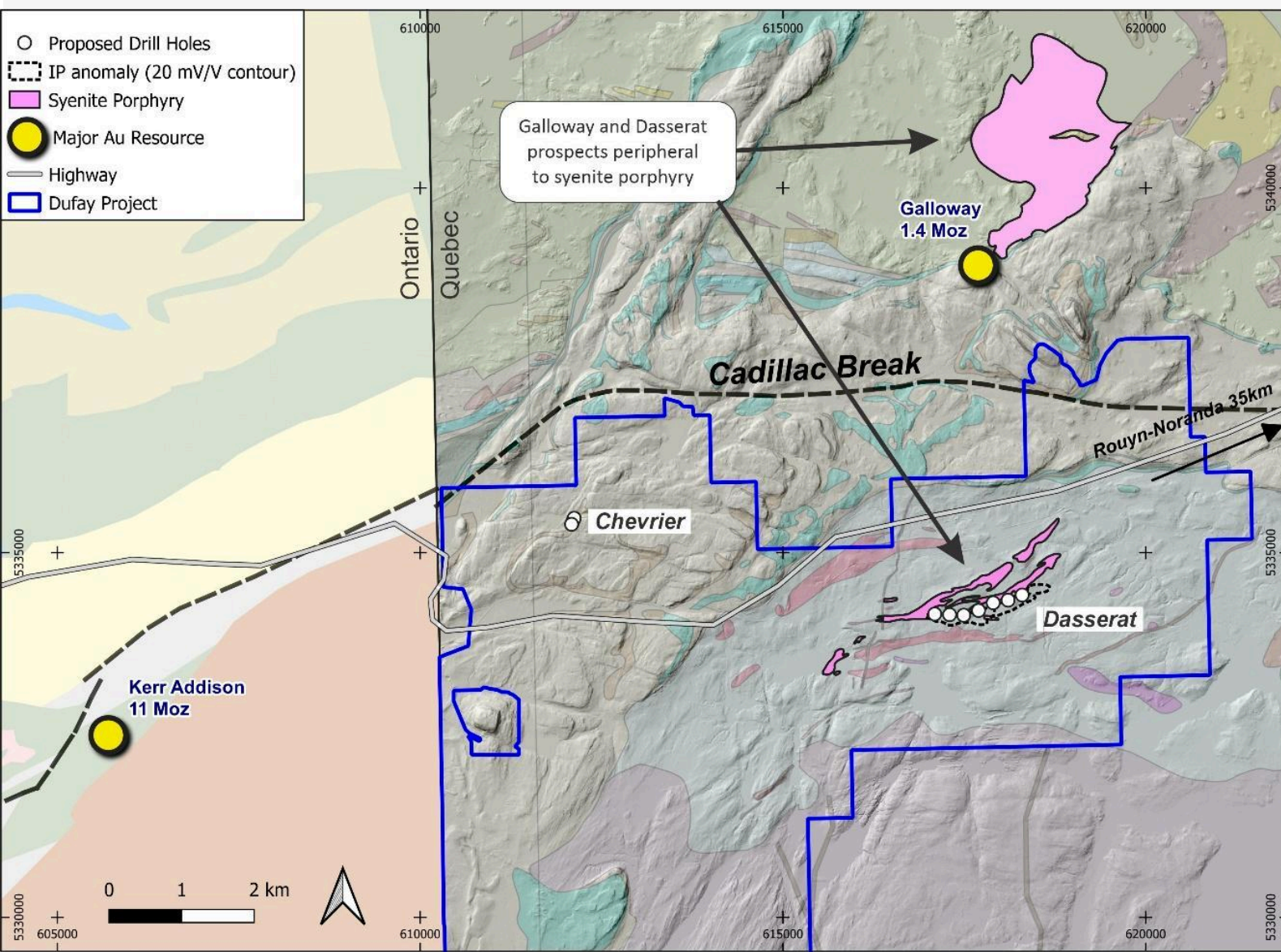
Question:

What targets exist on the project?

Answer:

Dasserat Target

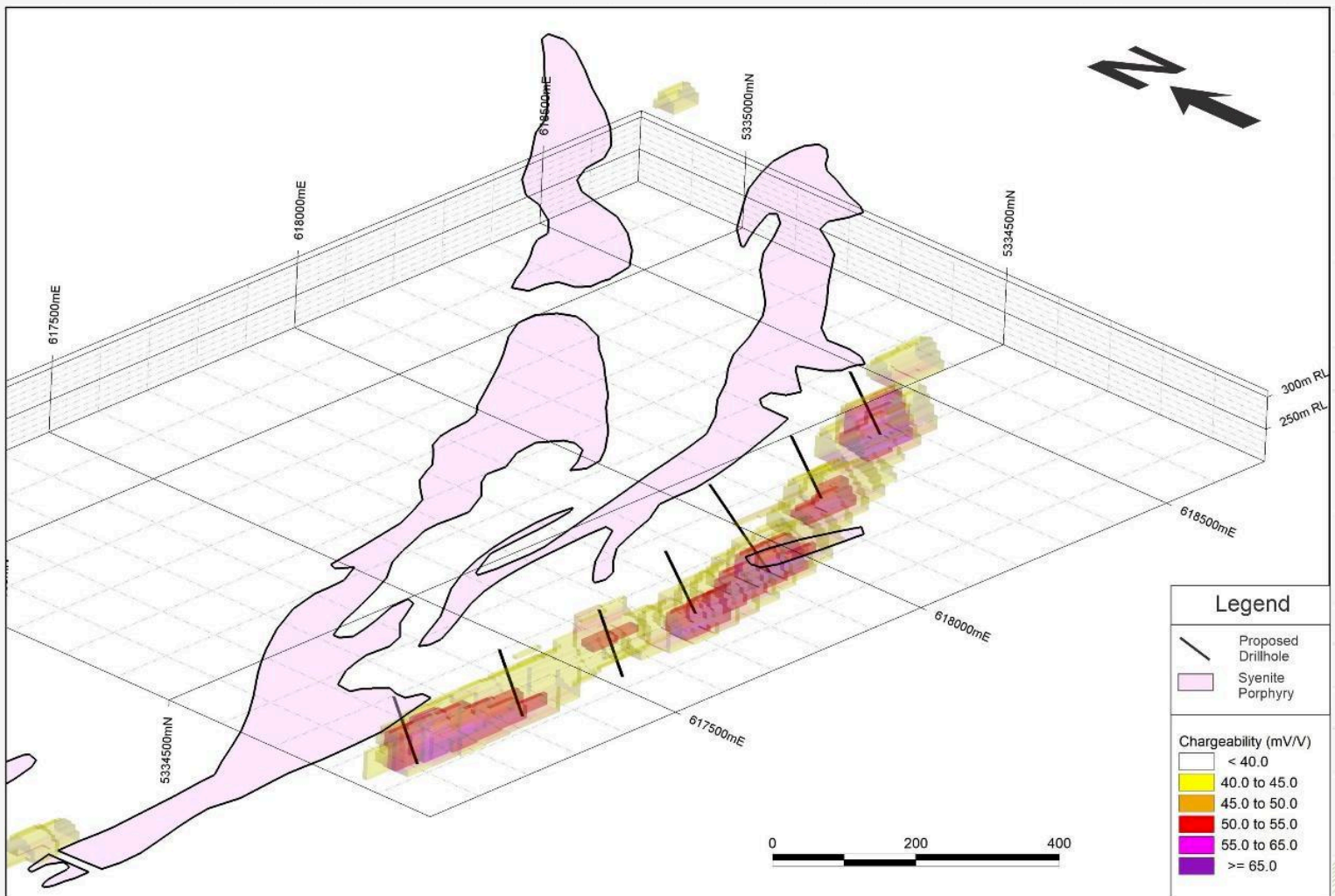
The project area is notable for a group of small, late Archaean syenite porphyry bodies that intrude into the Archaean sediments. Previous geophysical survey (Induced Polarisation, 2016) identified a strike extensive 1.2km anomalous zone, which has never been drilled. In the period since the IP survey at Dasserat, the neighbouring Galloway Project 5km to the north (Fokus Mining) has defined a >1 Moz Au-Cu resource across three prospects, all of which are inferred to be spatially and genetically associated with an adjacent syenite porphyry intrusive. The Hendrik resource at Galloway is disseminated sulphide Au-Cu mineralisation with intercepts including 322m @ 1.03g/t AuEq and 312m @ 1.1g/t AuEq, and is being actively explored by Fokus Mining. A ground EM survey is currently underway on the prospect, with drilling planned for early February 2025.





Deep Induced Polarization target at Dasserat

Olympio Metals \$0.037 ASX:OLY





Chevrier Target

The Dufay Copper-Gold Project contains numerous historical showings of chalcopyrite-rich quartz veining, including the Chevrier workings. The mineralisation at Chevrier consists of quartz-pyrite-chalcopyrite veining and breccia with common pods and stringers of chalcopyrite-rich sulphides, hosted in shale. Select zones of mineralisation show intense potassic feldspar alteration, which may be suggestive of remobilisation of earlier potassic alteration associated with alkaline porphyry intrusives. The prospect was mined briefly in the 1920s, as shown by an extensive adit. Recent rock chip sampling has revealed copper grades up to 13.3%. A ground EM survey is currently underway on the project, with drilling planned for early February 2025.

Olympio Metals \$0.037 ASX:OLY

